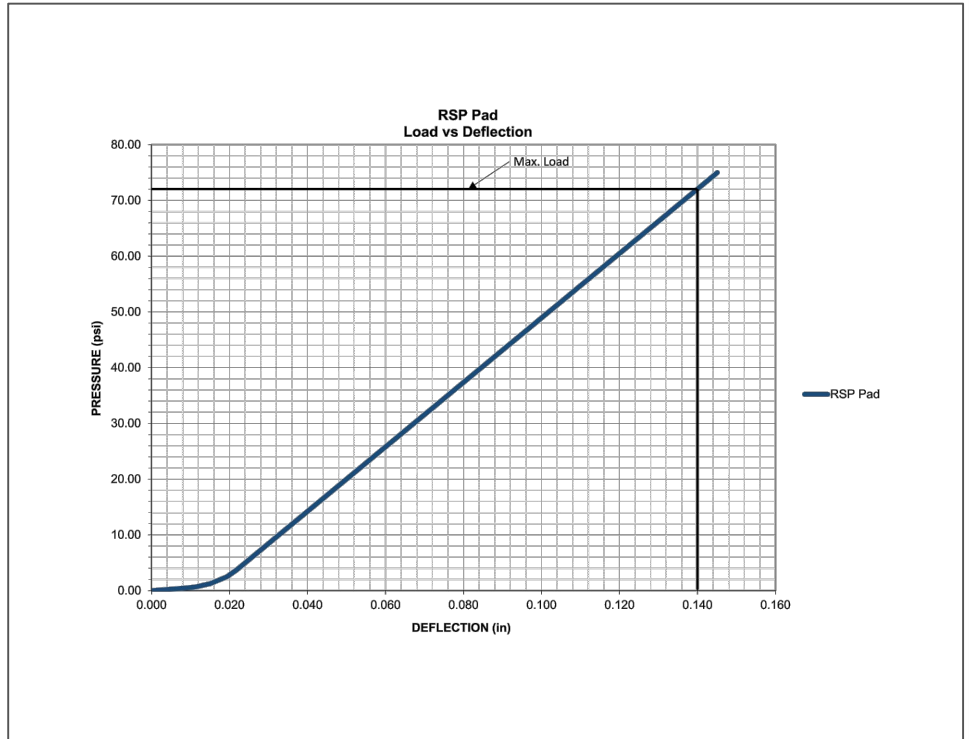
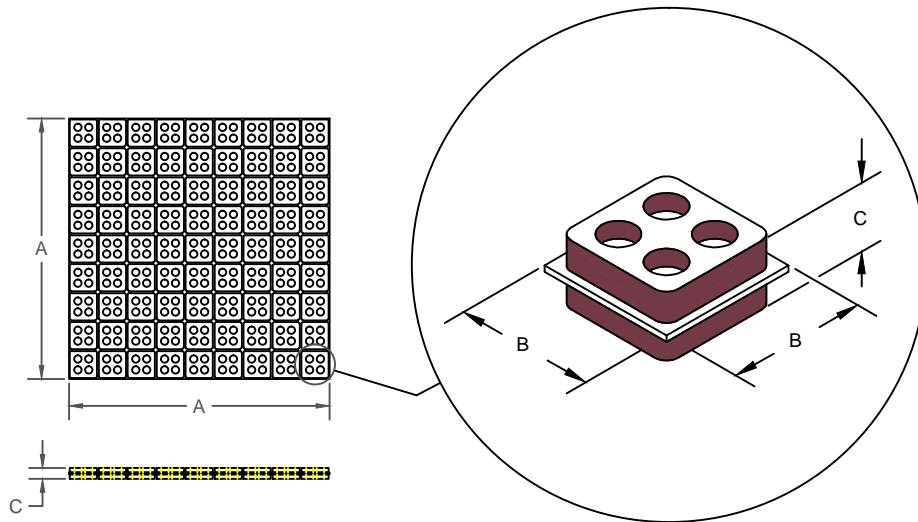


RSP ISOLATION PAD

TYPE	A	B	C
RSP	18.00	2.00	0.75

I-P UNITS (INCHES AND POUNDS)



SPECIFICATIONS:

- FULL SHEET IS 18 X 18 X 0.75.
- CONTAINS (81) 2 X 2 PADS.
- MAX LOAD RATING FOR EACH 2 X 2 PAD IS 288 LBS.
- RAW MATERIAL 50 DURO NEOPRENE BLEND.



KINETICS NOISE CONTROL, INC
 6300 IRELAN PL,
 DUBLIN, OH 43017 USA
 Ph: 614 889-0480, Fax: 614 889-0540
 www.kineticsnoise.com

Model:
 RSP PAD

By: JMJ
 Date: 05/16/03
 Revised: 10/15/14/BB

Drawing No:
 S-02.04-11