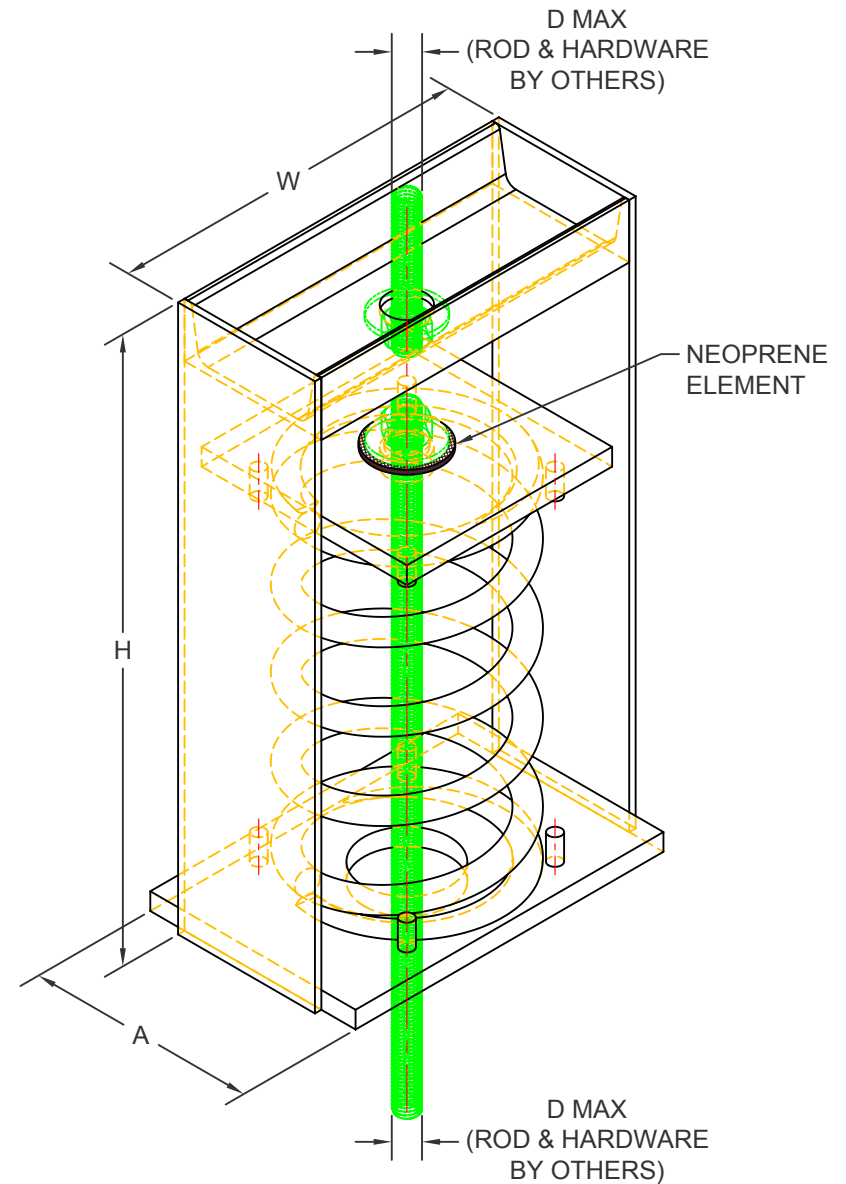


SH 4" DEFLECTION ISOLATION HANGERS

IP UNITS (INCHES AND POUNDS)

TYPE	H	W	A	D _{MAX}
4-100/1600	16.00	9.38	6.00	0.88

STANDARD RATINGS				SPRING COIL		
TYPE	SIZE	LOAD	DEFL.	COLOR	FREE HT.	O.D.
SH	4-100	100	4.00	GRAY	10.00	5.63
SH	4-250	250	4.00	BLUE	10.00	5.63
SH	4-500	500	4.00	GREEN	10.00	5.63
SH	4-750	750	4.00	BLACK	10.00	5.63
SH	4-1000	1000	4.00	RED	10.00	5.63
SH	4-1250	1250	4.00	BROWN	10.00	5.63
SH	4-1600	1600	4.00	ORANGE	10.00	5.63



SPECIFICATIONS:

- SPRING ELEMENTS ARE POWDER COATED.
- BRACKETS AND LOAD PLATES ARE PAINTED.
- ISOLATION HANGERS HAVE A TYPICAL OVERLOAD OF 50%.
- ISOLATION HANGERS HAVE A MINIMUM K_x/K_y RATIO OF 1.0.
- SPRING ELEMENTS ARE SAFE AT SOLID LOADING.
- HANGER BRACKETS WILL CARRY (5) TIMES OVERLOAD WITHOUT FAILURE.
- HANGER BRACKETS WILL ALLOW 30° ROD MISALIGNMENT WITHOUT SHORT CIRCUITING.



KINETICS NOISE CONTROL, INC
 6300 IRELAN PL,
 DUBLIN, OH 43017 USA
 Ph: 614 889-0480, Fax: 614 889-0540
 www.kineticsnoise.com

Model:
 SH-
 4-100/1600

By: BB
 Date: 12/07/05
 Revised: 10/17/18/BB

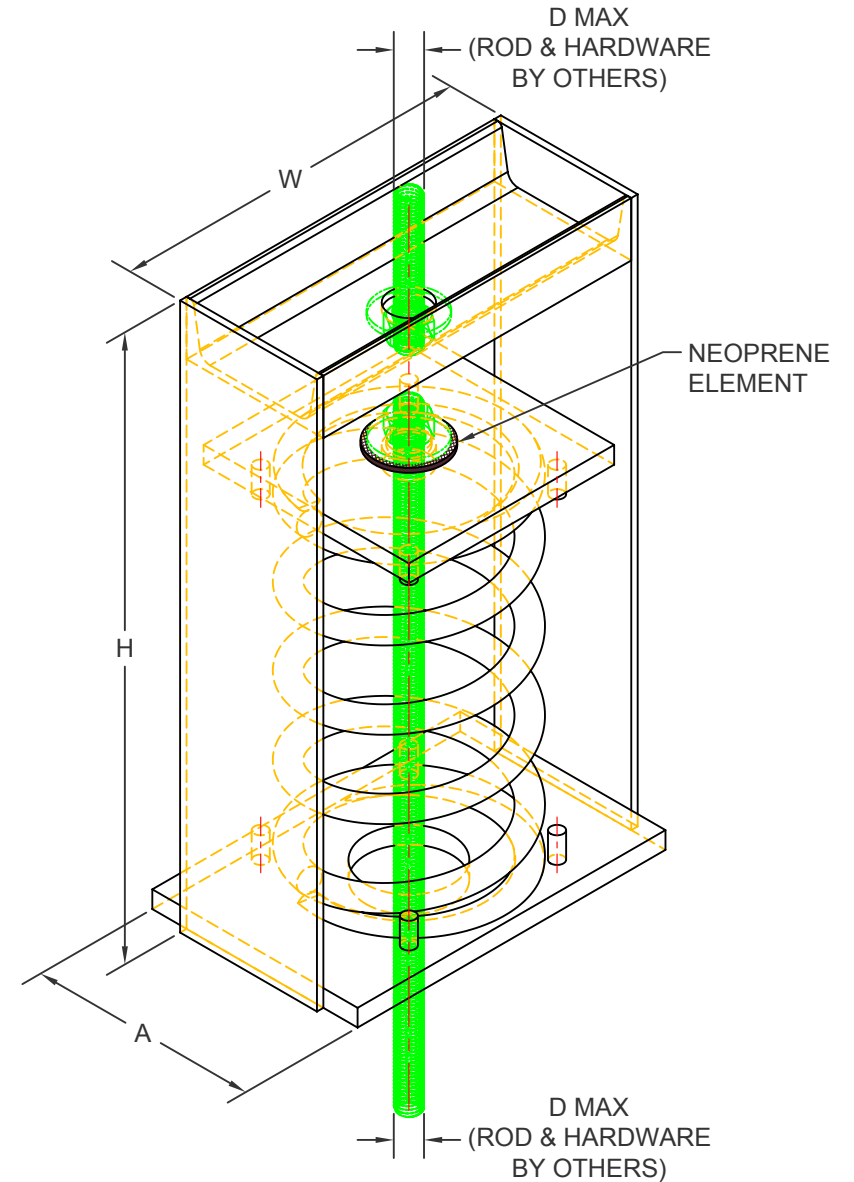
Drawing No:
 S-03.36-41

SH 102 mm DEFLECTION ISOLATION HANGERS

S-I UNITS (mm AND kg)

TYPE	H	W	A	DMAX
4-100/1600	406	238	152	22

STANDARD RATINGS				SPRING COIL		
TYPE	SIZE	LOAD	DEFL.	COLOR	FREE HT.	O.D.
SH	4-100	45	102	GRAY	254	143
SH	4-250	113	102	BLUE	254	143
SH	4-500	227	102	GREEN	254	143
SH	4-750	340	102	BLACK	254	143
SH	4-1000	454	102	RED	254	143
SH	4-1250	567	102	BROWN	254	143
SH	4-1600	726	102	ORANGE	254	143



SPECIFICATIONS:

- SPRING ELEMENTS ARE POWDER COATED.
- BRACKETS AND LOAD PLATES ARE PAINTED.
- ISOLATION HANGERS HAVE A TYPICAL OVERLOAD OF 50%.
- ISOLATION HANGERS HAVE A MINIMUM Kx/Ky RATIO OF 1.0.
- SPRING ELEMENTS ARE SAFE AT SOLID LOADING.
- HANGER BRACKETS WILL CARRY (5) TIMES OVERLOAD WITHOUT FAILURE.
- HANGER BRACKETS WILL ALLOW 30° ROD MISALIGNMENT WITHOUT SHORT CIRCUITING.



KINETICS NOISE CONTROL, INC
 6300 IRELAN PL,
 DUBLIN, OH 43017 USA
 Ph: 614 889-0480, Fax: 614 889-0540
 www.kineticsnoise.com

Model:
 SH-
 4-100/1600

By: BB
 Date: 12/07/05
 Revised: 10/17/18/BB

Drawing No:
 S-03.36-41
 METRIC