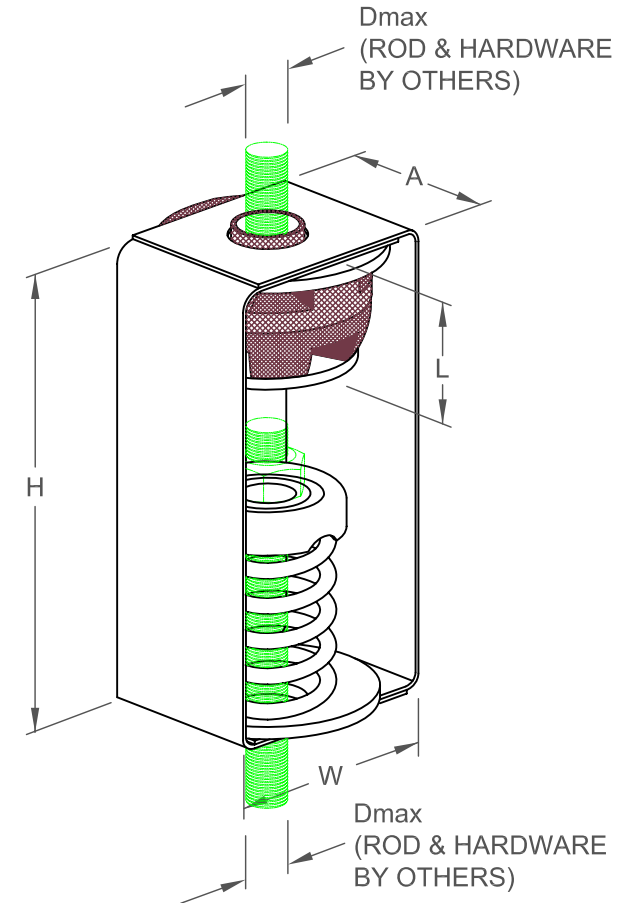


SRH 1" DEFLECTION ISOLATION HANGERS
IP UNITS (INCHES AND POUNDS)

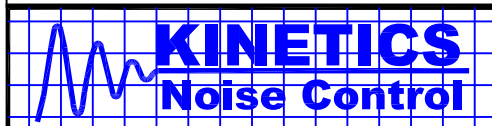
TYPE	L	H	W	A	Dmax
1-2200/3500	1.85	9.50	5.00	4.75	0.88

STANDARD RATINGS				SPRING COIL				INSERT COLOR
TYPE	SIZE	LOAD	DEFL.	COLOR		FREE HT.	O.D.	
SRH	1-2200	2200	1.52	ORANGE	GRAY	4.20	3.00	PINK
SRH	1-2465	2465	1.58	BLUE		4.20	3.00	PINK
SRH	1-2865	2865	1.67	BLUE	GRAY	4.20	3.00	PINK
SRH	1-3500	3500	1.82	BLUE	BROWN	4.20	3.00	PINK



SPECIFICATIONS:

- SPRING ELEMENTS AND BRACKETS ARE POWDER COATED
- LOAD PLATES ARE BRIGHT ZINC PLATED
- ISOLATION HANGERS HAVE A MINIMUM K_x/K_y RATIO OF 1.0
- SPRING ELEMENTS ARE SAFE AT SOLID LOADING
- HANGER BRACKETS WILL CARRY (5) TIMES OVERLOAD WITHOUT FAILURE
- ISOLATION HANGERS HAVE A TYPICAL OVERLOAD OF 50%
- HANGER BRACKETS WILL ALLOW 30° ROD MISALIGNMENT WITHOUT SHORT CIRCUITING
- "NO SHORT" STEP CAP



KINETICS NOISE CONTROL, INC
 6300 IRELAN PL,
 DUBLIN, OH 43017 USA
 Ph: 614 889-0480, Fax: 614 889-0540
 www.kineticsnoise.com

Model:
SRH
1-2200/3500

By: **JMJ**
 Date: **03/18/03**
 Revised: **/**

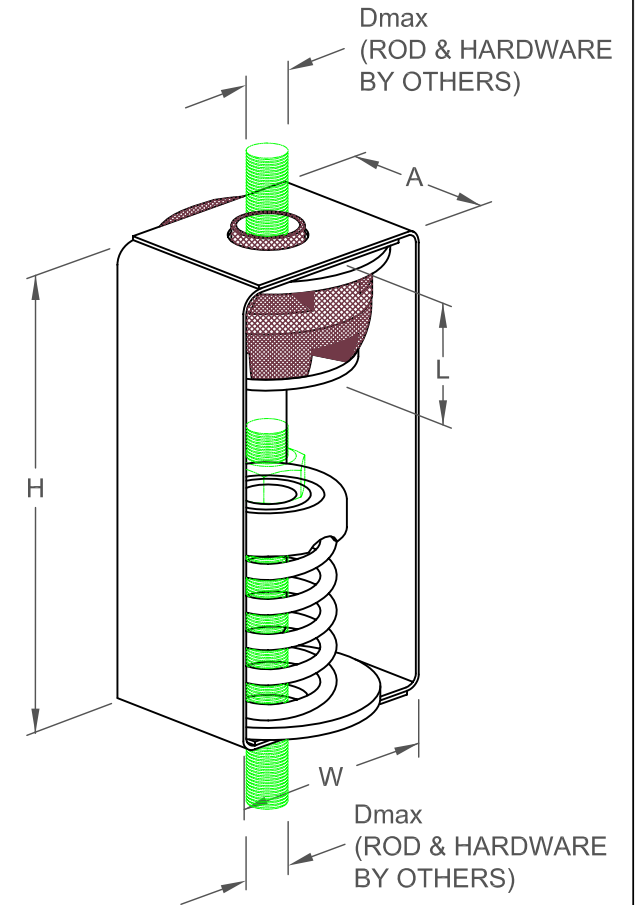
Drawing No:
S-03.37-14

SRH 25 mm DEFLECTION ISOLATION HANGERS

S-I UNITS (mm AND kg)

TYPE	L	H	W	A	Dmax
1-2200/3500	47	241	127	121	22

STANDARD RATINGS				SPRING COIL				INSERT COLOR
TYPE	SIZE	LOAD	DEFL.	COLOR		FREE HT.	O.D.	
SRH	1-2200	998	39	ORANGE	GRAY	107	76	PINK
SRH	1-2465	1118	40	BLUE		107	76	PINK
SRH	1-2865	1300	43	BLUE	GRAY	107	76	PINK
SRH	1-3500	1588	46	BLUE	BROWN	107	76	PINK



SPECIFICATIONS:

- SPRING ELEMENTS AND BRACKETS ARE POWDER COATED
- LOAD PLATES ARE BRIGHT ZINC PLATED
- ISOLATION HANGERS HAVE A MINIMUM K_x/K_y RATIO OF 1.0
- SPRING ELEMENTS ARE SAFE AT SOLID LOADING
- HANGER BRACKETS WILL CARRY (5) TIMES OVERLOAD WITHOUT FAILURE
- ISOLATION HANGERS HAVE A TYPICAL OVERLOAD OF 50%
- HANGER BRACKETS WILL ALLOW 30° ROD MISALIGNMENT WITHOUT SHORT CIRCUITING
- "NO SHORT" STEP CAP



KINETICS NOISE CONTROL, INC
6300 IRELAN PL,
DUBLIN, OH 43017 USA
Ph: 614 889-0480, Fax: 614 889-0540
www.kineticsnoise.com

Model:
SRH
1-2200/3500

By: JMJ
Date: 04/15/03
Revised: /

Drawing No:
S-03.37-14(M)