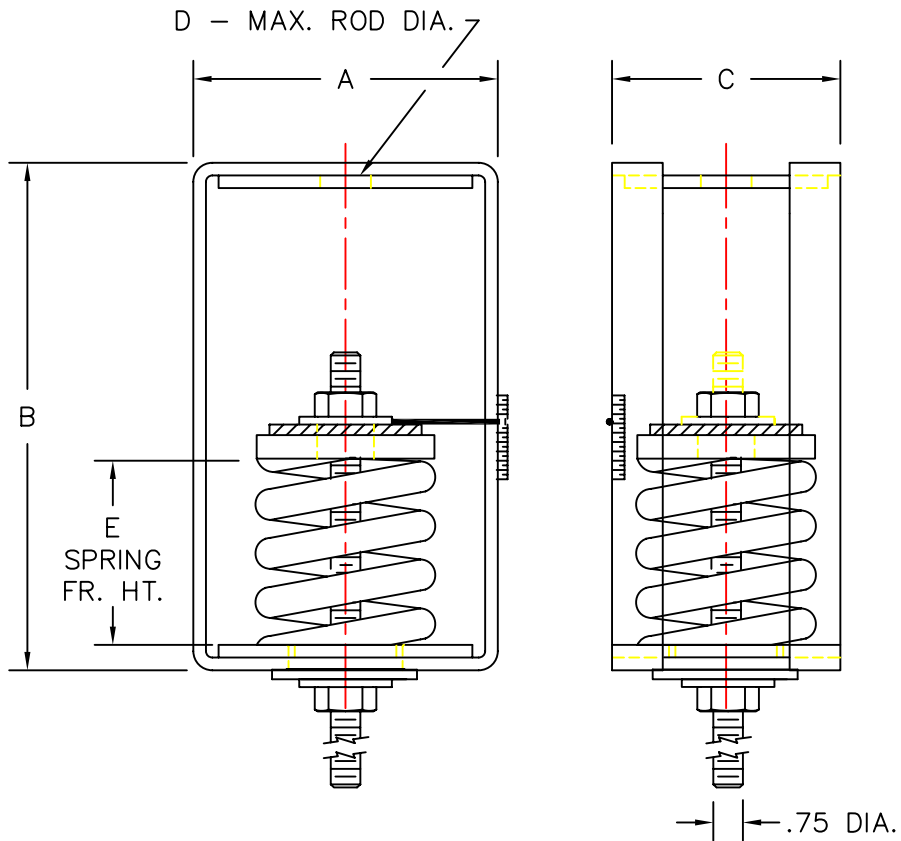
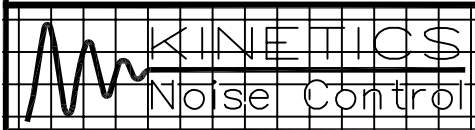


RATED LOAD POUNDS	SPRING COLOR	RATED DEFLECTION INCHES	DIMENSIONS IN INCHES				
			A	B	C	D	E
SPH-2-2000	ORANGE	2.00	6.00	12.00	6.00	1.00	7.00
SPH-2-2500	BLUE	2.00	6.00	12.00	6.00	1.00	7.00



- SPH-2 ISOLATION HANGERS HAVE A MINIMUM K_x/K_y OF 1.2
- SPH-2 ISOLATION HANGERS HAVE A TYPICAL OVERLOAD CAPACITY OF 50%
- SPH-2 SPRING ELEMENTS ARE SAFE FOR SOLID LOADING
- SPH-2 HANGER BRACKETS WILL CARRY (5) TIMES OVERLOAD WITHOUT FAILURE
- SPH-2 HANGER BRACKETS WILL ALLOW 30° ROD MISALIGNMENT WITHOUT SHORT CIRCUITING
- SPH-2 SPRING ELEMENTS AND BRACKETS ARE PAINTED



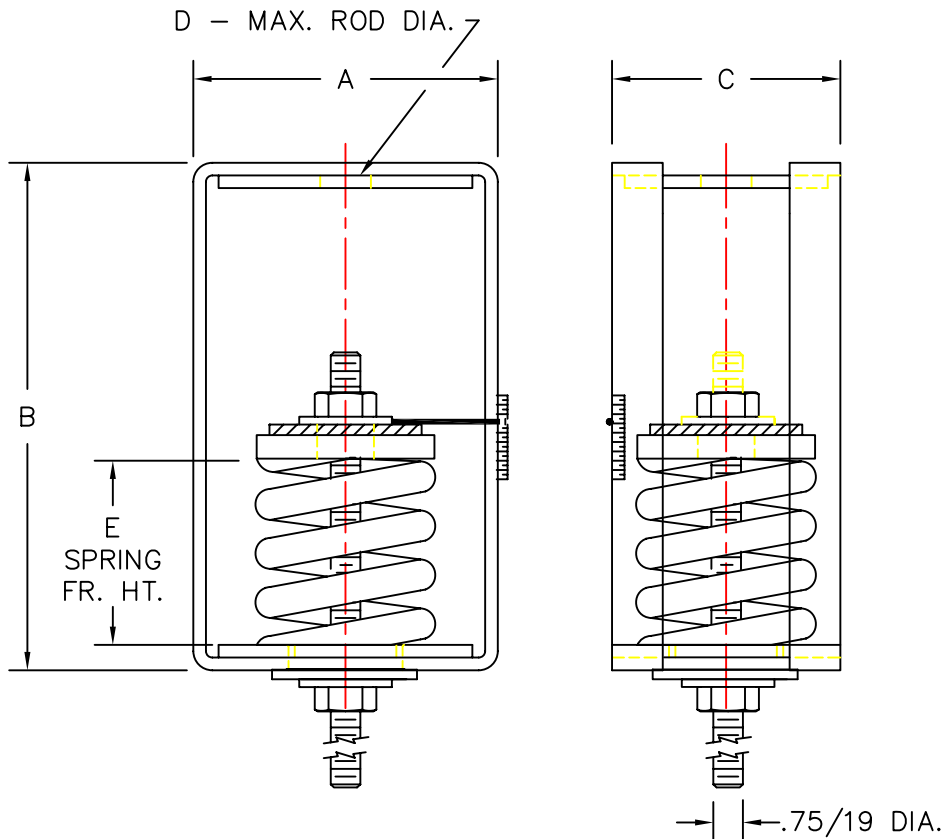
TITLE
MODEL SPH-2 HANGER

LAST DATE REVISED
4/16/96

DRAWN BY
DW

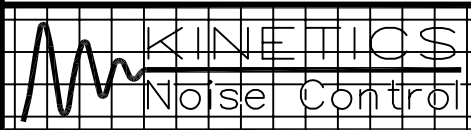
DRAWING NO. S-DWG
S-03.46-2C

MODEL	SPRING COLOR	RATED LOAD LB/KG	RATED DEFLECTION IN/MM	DIMENSIONS IN INCHES / MILLIMETERS				
				A	B	C	D	E
SPH-2-2750	BLUE/BLUE	2750/1245	2.00/51	6.00/152	12.00/305	6.00/152	1.00/25	7.00/178
SPH-2-3025	BLUE/GREEN	3025/1375	2.00/51	6.00/152	12.00/305	6.00/152	1.00/25	7.00/178
SPH-2-3250	BLUE/BLACK	3250/1475	2.00/51	6.00/152	12.00/305	6.00/152	1.00/25	7.00/178



- SPH-2 ISOLATION HANGERS HAVE A MINIMUM K_x/K_y OF 1.3
- SPH-2 ISOLATION HANGERS HAVE A TYPICAL OVERLOAD CAPACITY OF 50%
- SPH-2 SPRING ELEMENTS ARE SAFE FOR SOLID LOADING
- SPH-2 HANGER BRACKETS WILL CARRY (5) TIMES OVERLOAD WITHOUT FAILURE
- SPH-2 HANGER BRACKETS WILL ALLOW 30° ROD MISALIGNMENT WITHOUT SHORT CIRCUITING
- SPH-2 SPRING ELEMENTS AND BRACKETS ARE PAINTED

NOTE:
ALL THREADED MEMBERS ARE AMERICAN STANDARD.



TITLE
MODEL SPH-2 HANGER

LAST DATE
REVISED
09/27/96

DRAWN BY
D.DRAKE

DRAWING NO.
S-03.46-2D