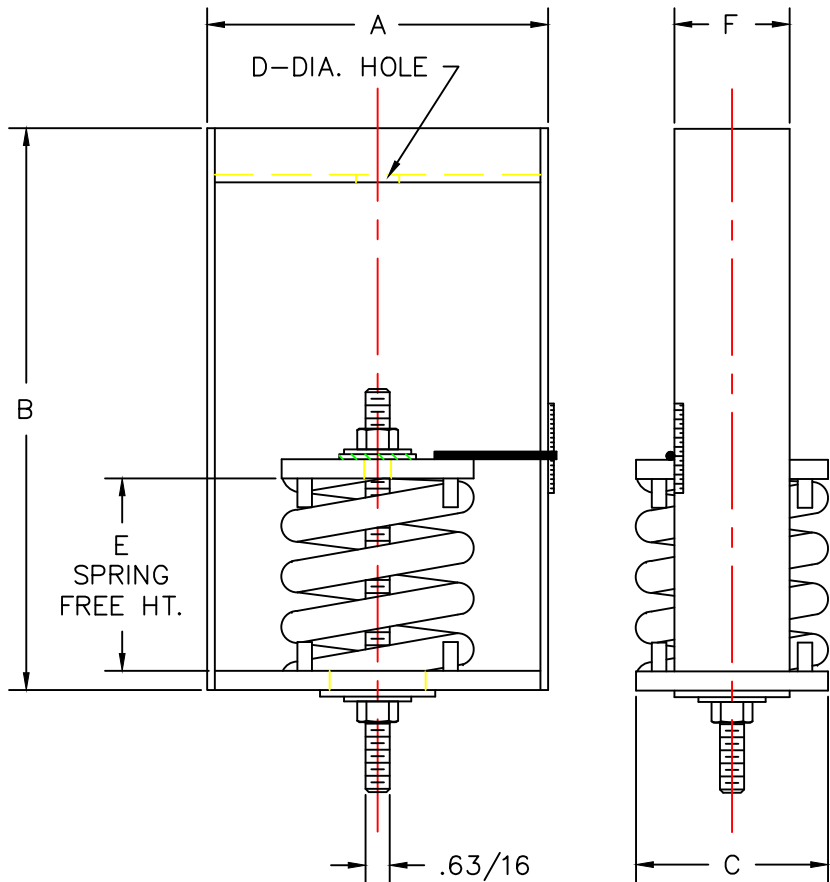


MODEL	SPRING COLOR	RATED LOAD LB/KG	RATED DEFLECTION IN/MM	DIMENSIONS IN INCHES / MILLIMETERS					
				A	B	C	D	E	F
SPH-4-100	GRAY	100/46	4.00/102	9.38/238	16/406	6.00/152	1.13/29	10/254	4.00/102
SPH-4-250	BLUE	250/114	4.00/102	9.38/238	16/406	6.00/152	1.13/29	10/254	4.00/102
SPH-4-500	GREEN	500/227	4.00/102	9.38/238	16/406	6.00/152	1.13/29	10/254	4.00/102
SPH-4-750	BLACK	750/341	4.00/102	9.38/238	16/406	6.00/152	1.13/29	10/254	4.00/102
SPH-4-1000	RED	1000/455	4.00/102	9.38/238	16/406	6.00/152	1.13/29	10/254	4.00/102
SPH-4-1250	BROWN	1250/568	4.00/102	9.38/238	16/406	6.00/152	1.13/29	10/254	4.00/102
SPH-4-1600	ORANGE	1600/727	4.00/102	9.38/238	16/406	6.00/152	1.13/29	10/254	4.00/102



- SPH-4 ISOLATION HANGERS HAVE A MINIMUM K_x/K_y OF 1.2
- SPH-4 ISOLATION HANGERS HAVE A TYPICAL OVERLOAD CAPACITY OF 50%
- SPH-4 SPRING ELEMENTS ARE SAFE FOR SOLID LOADING
- SPH-4 HANGER BRACKETS WILL CARRY (5) TIMES OVERLOAD WITHOUT FAILURE
- SPH-4 HANGER BRACKETS WILL ALLOW 30° ROD MISALIGNMENT WITHOUT SHORT CIRCUITING
- SPH-4 SPRING ELEMENTS AND BRACKETS ARE PAINTED

NOTE:
ALL THREADED MEMBERS ARE AMERICAN STANDARD.



TITLE
MODEL SPH-4 HANGER

LAST DATE
REVISED
09/27/96

DRAWN BY
D. DRAKE

DRAWING NO.
S-03.46-4C