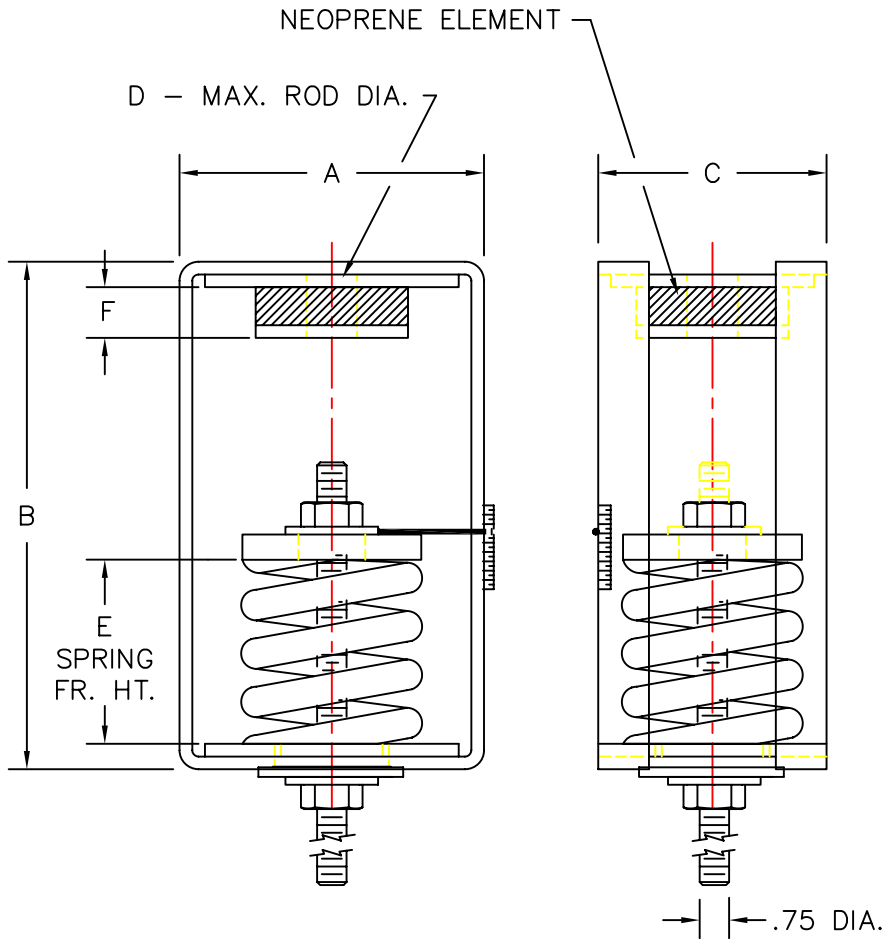
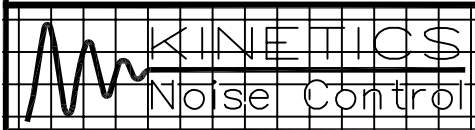


RATED LOAD POUNDS	SPRING COLOR	RATED DEFLECTION INCHES	DIMENSIONS IN INCHES					
			A	B	C	D	E	F
SRPH-2-2000	ORANGE	2.11	6.00	12.00	6.00	1.00	7.00	1.25
SRPH-2-2500	BLUE	2.12	6.00	12.00	6.00	1.00	7.00	1.25



SRPH-2 ISOLATION HANGERS HAVE A MINIMUM  $K_x/K_y$  OF 1.4  
 SRPH-2 SPRING ELEMENTS ARE SAFE FOR SOLID LOADING  
 SRPH-2 HANGER BRACKETS WILL CARRY (5) TIMES OVERLOAD WITHOUT FAILURE  
 SRPH-2 HANGER BRACKETS WILL ALLOW 30° ROD MISALIGNMENT WITHOUT SHORT CIRCUITING  
 SRPH-2 SPRING ELEMENTS AND BRACKETS ARE PAINTED LOAD PLATES ARE BRIGHT ZINC PLATED.



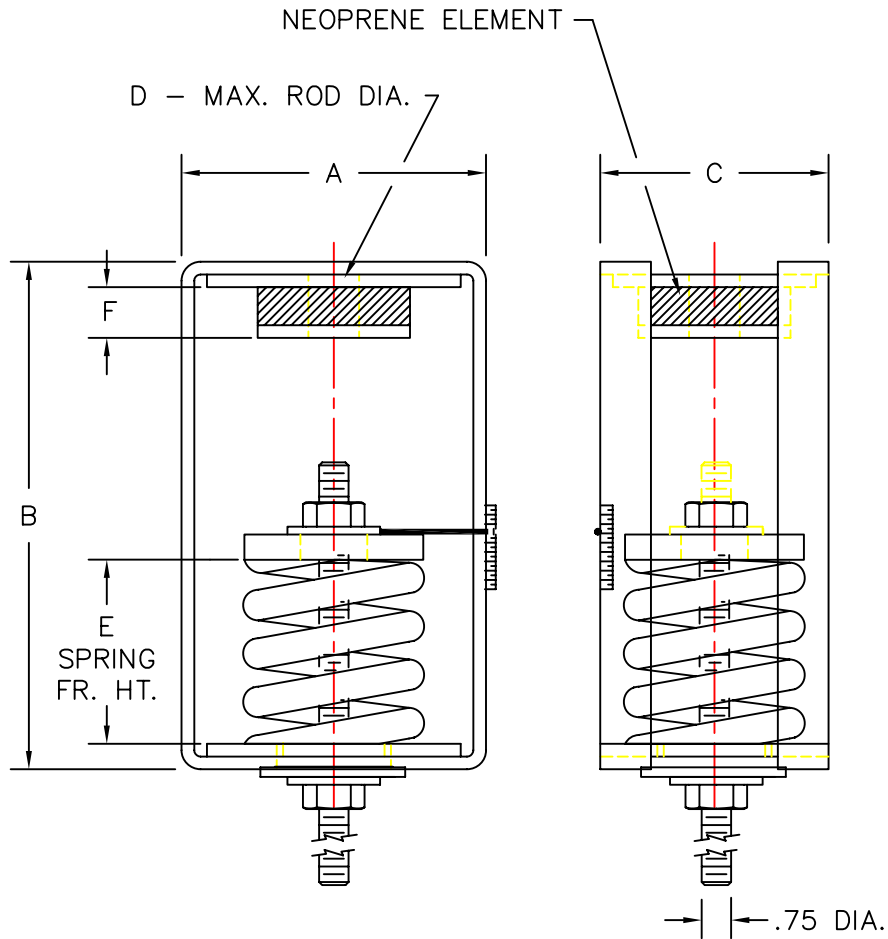
TITLE  
 MODEL SRPH-2 HANGER

LAST DATE REVISED  
 4/17/96

DRAWN BY  
 DW

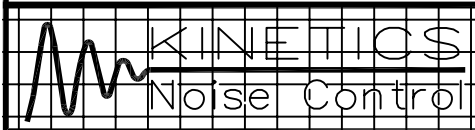
DRAWING NO. S-DWG  
 S-03.47-2C

MODEL	SPRING COLOR	RATED DEFLECTION LB/KG	RATED LOAD IN/MM	DIMENSIONS IN INCHES / MILLIMETERS					
				A	B	C	D	E	F
SRPH-2-2750	BLUE BLUE	2750/1245	2.16/55	6.00/152	12.00/305	6.00/152	1.00/26	7.00/178	1.25/32
SRPH-2-3025	BLUE GREEN	3025/1375	2.20/56	6.00/152	12.00/305	6.00/152	1.00/26	7.00/178	1.25/32
SRPH-2-3250	BLUE BLACK	3250/1475	2.20/56	6.00/152	12.00/305	6.00/152	1.00/26	7.00/178	1.25/32



SRPH-2 ISOLATION HANGERS HAVE A MINIMUM  $K_x/K_y$  OF 1.3  
 SRPH-2 SPRING ELEMENTS ARE SAFE FOR SOLID LOADING  
 SRPH-2 HANGER BRACKETS WILL CARRY (5) TIMES OVERLOAD WITHOUT FAILURE  
 SRPH-2 HANGER BRACKETS WILL ALLOW 30° ROD MISALIGNMENT WITHOUT SHORT CIRCUITING  
 SRPH-2 SPRING ELEMENTS AND BRACKETS ARE PAINTED LOAD PLATES ARE BRIGHT ZINC PLATED.

NOTE:  
 ALL THREADED MEMBERS ARE AMERICAN STANDARD.



TITLE  
 MODEL SRPH-2 HANGER

LAST DATE  
 REVISED  
 10/02/96

DRAWN BY  
 D. DRAKE

DRAWING NO.  
 S-03.47-2D