

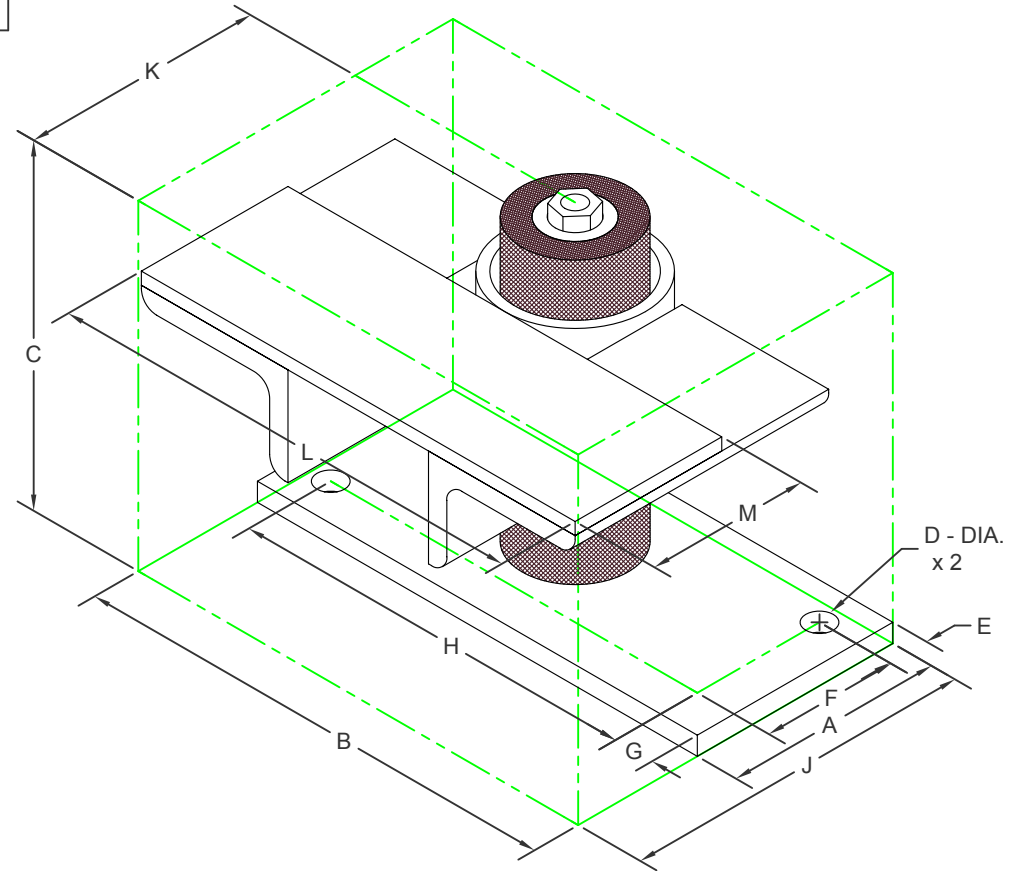
KRG RISER GUIDE

SI UNITS (mm AND kg)

ITEM	A	B	C	D	E	F	G	H	J	K	L	M
KRGA	76	152	171	11	14	48	14	124	113	75	127	51
KRGB	102	229	167	14	19	64	19	191	164	113	225	76
KRGC	127	241	170	17	24	79	24	194	176	113	225	76
KRGD	152	279	168	21	29	95	29	222	222	146	241	102
KRGE	152	298	197	21	29	95	29	222	251	175	298	102

STANDARD RATINGS (LRFD)

TYPE	SIZE	HORIZONTAL LOAD CAPACITY		MAX. VERTICAL TRAVEL
		WELDED OR BOLTED TO STEEL	ATTACHED W/ KCCAB CONCRETE ANCHOR	
KRG	A	240	226	89
KRG	B	367	367	89
KRG	C	680	680	89
KRG	D	1089	1089	89
KRG	D	2268	N.A.	89



SPECIFICATIONS:

- LATERALLY RESTRAINED, VERTICALLY FLOATING, RISER GUIDE WITH REPLACEABLE NEOPRENE SNUBBING ELEMENT.
- APPLICATION TEMPERATURE RANGE IS 0° F (-18 C) TO 220° F (104 C).
- ISOLATORS ARE PAINTED.
- FOR CONCRETE ANCHORS, THE CONCRETE SHALL HAVE A MIN. COMPRESSIVE STRENGTH OF 3000 PSI (211 kg/cm²).