

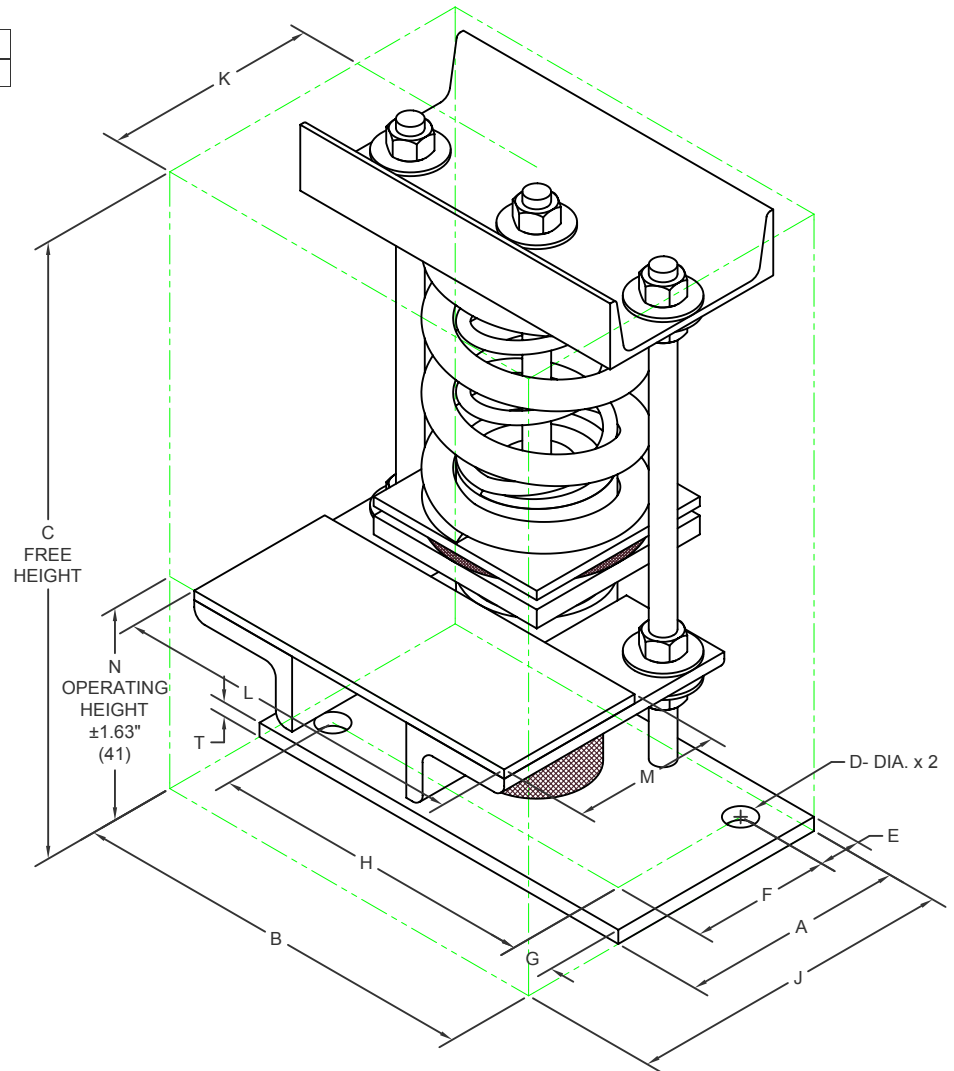
### KRG-R 51 mm DEFLECTION ISOLATED RISER GUIDES

S-I UNITS (mm AND kg)

| TYPE | A   | B   | C   | D  | E  | F  | G  | H   | J   | K   | L   | M   | N   | T  |
|------|-----|-----|-----|----|----|----|----|-----|-----|-----|-----|-----|-----|----|
| KRGD | 152 | 279 | 416 | 21 | 29 | 95 | 29 | 222 | 222 | 146 | 241 | 102 | 114 | 13 |

| STANDARD RATINGS |        | SPRING COIL |       |      |      |       |       |
|------------------|--------|-------------|-------|------|------|-------|-------|
| TYPE             | SIZE   | COLOR       |       | FREE |      | RATED |       |
|                  |        | OUTER       | INNER | HT.  | O.D. | LOAD  | DEFL. |
| KRGD-R           | 2-2000 | ORANGE      |       | 178  | 127  | 907   | 51    |
| KRGD-R           | 2-2250 | ORANGE      | BLUE  | 178  | 127  | 1021  | 51    |
| KRGD-R           | 2-2500 | BLUE        |       | 178  | 127  | 1134  | 51    |
| KRGD-R           | 2-2750 | ORANGE      | BLACK | 178  | 127  | 1247  | 51    |
| KRGD-R           | 2-3000 | BLUE        | GREEN | 178  | 127  | 1361  | 51    |
| KRGD-R           | 2-3600 | ORANGE      | RED   | 178  | 127  | 1633  | 51    |

SEE DRAWING S-04.61-02 FOR KRG LOAD CAPACITY DATA.



#### SPECIFICATIONS:

- VERTICALLY SPRUNG, LATERALLY RESTRAINED, RISER GUIDE WITH REPLACEABLE NEOPRENE SNUBBING ELEMENT.
- POWDER COATED SPRING ELEMENT. OTHER METALLIC COMPONENTS PAINTED.
- MINIMUM OVERLOAD OF 50%.
- MINIMUM Kx/Ky RATIO OF 1.0.
- ALL ELEMENTS SAFE AT SOLID LOADING.
- ALL THREADED MEMBERS ARE AMERICAN STANDARD.
- APPLICATION TEMPERATURE RANGE IS 0° F (-18° C) TO 220° F (104° C).



KINETICS NOISE CONTROL, INC  
6300 IRELAN PL,  
DUBLIN, OH 43017 USA  
Ph: 614 889-0480, Fax: 614 889-0540  
www.kineticsnoise.com

Model:  
KRGD-R-2-  
2000/3600

By: BB  
Date: 07/11/08  
Revised: 05/21/15/BB

Drawing No:  
S-04.61-24  
METRIC