

**NOTE:**  
 MODEL ESR TO PROVIDE CONTINUOUS SUPPORT OF UNIT WEIGHT WITH 4" TOP RAIL.

**RESTRAINT AND ATTACHMENT DATA**

TO ACHIEVE FULL RESTRAINT RATING, WELD EACH ESR PEDESTAL TO STRUCTURAL STEEL IN 3 PLACES (MIN.) AS NOTED. 1) A 6"x 0.25" WELD CENTERED ON THE OUTSIDE EDGE OF EACH PEDESTAL BASEPLATE. 2) & 3) TWO 6"x 0.25" WELDS WRAPPED AROUND EACH CORNER AT THE ENDS OF THE INSIDE EDGE WITH 3" OF WELD ON EACH END AND 3" ALONG THE INSIDE EDGE.

**RESTRAINT RATING DATA (PER PEDESTAL)**

AT STANDARD HEIGHT WITH NO CROSS BRACES

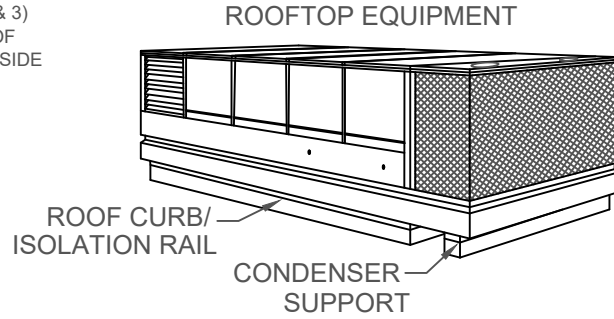
WELDED ATTACHMENT

HORIZONTAL - 3247 LB, VERTICAL - 8906 LB, COMBINED - 1164 LB

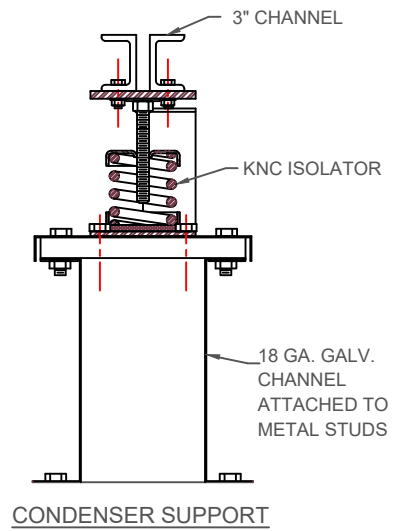
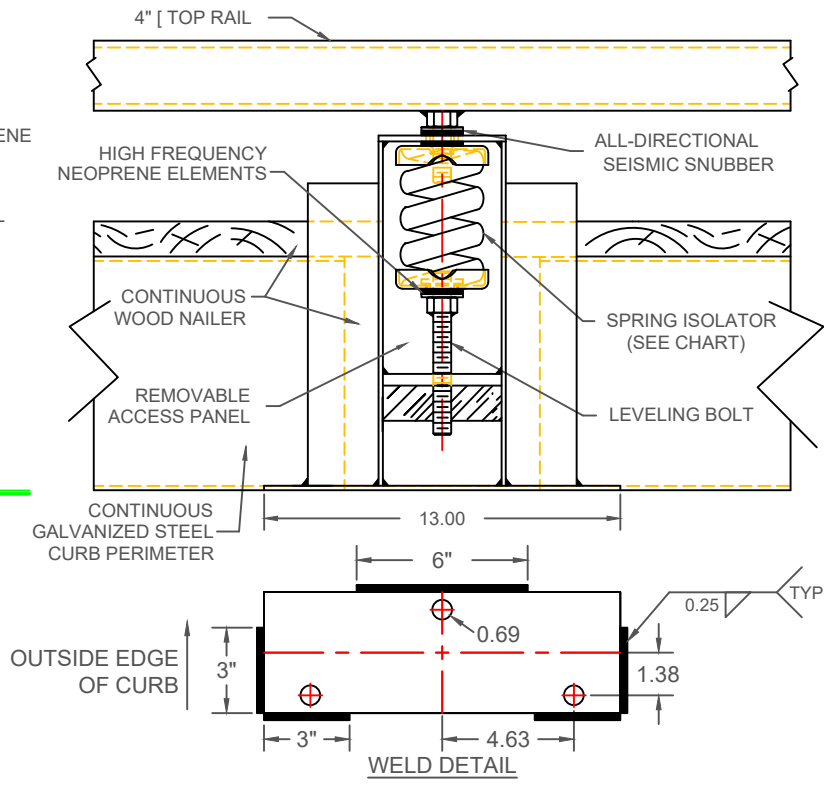
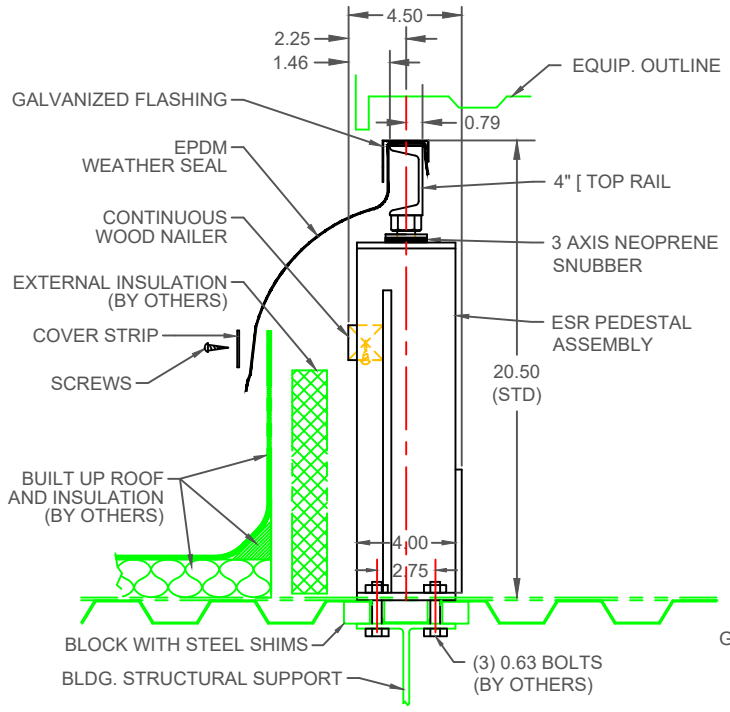
BOLTED ATTACHMENT

HORIZONTAL - 1547 LB, VERTICAL - 3984 LB, COMBINED - 1164 LB

CROSS BRACE MOMENT RESISTANCE - 18000 IN LB PER PEDESTAL



MODEL	SPRING CAPACITY (PER PEDESTAL) BY MODEL					
	RATED		SPRING			
	LOAD lb/kg	DEFL in/mm	FR. HT. in/mm	O.D. in/mm	COLOR OUTER INNER	
ESR-1-50	50/23	1.00/25	4.20/107	3.00/76	BEIGE	
ESR-1-100	100/45	1.00/25	4.20/107	3.00/76	CHROME	
ESR-1-250	250/113	1.79/45	4.20/107	3.00/76	BLUE	
ESR-1-450	450/204	1.54/39	4.20/107	3.00/76	GREEN	
ESR-1-625	625/283	1.44/37	4.20/107	3.00/76	BLACK	
ESR-1-800	800/363	1.31/33	4.20/107	3.00/76	GRAY	
ESR-1-1000	1000/454	1.15/29	4.20/107	3.00/76	RED	
ESR-1-1250	1250/567	1.09/28	4.20/107	3.00/76	BROWN	
ESR-1-1700	1700/771	0.95/24	4.20/107	3.00/76	ORANGE	
ESR-1-2200	2200/998	1.00/26	4.20/107	3.00/76	ORANGE	GRAY
ESR-1-2465	2465/1118	1.00/25	4.20/107	3.00/76	BLUE	
ESR-1-2865	2865/1300	1.00/25	4.20/107	3.00/76	BLUE	GRAY
ESR-1-3500	3500/1588	1.00/25	4.20/107	3.00/76	BLUE	BROWN



- SPRING ISOLATORS ARE COMPUTER SELECTED AND LOCATED TO NOMINALLY PROVIDE THE RATED STATIC DEFLECTION.
- SPRING ISOLATORS HAVE A MINIMUM Kx/Ky OF 1.2.
- SPRING ISOLATORS HAVE A TYPICAL OVERLOAD CAPACITY OF 50%.
- SPRING ISOLATORS ARE SAFE AT SOLID LOADING.
- SPRING ISOLATORS ARE POWDER COATED.



TITLE  
**ESR-1-ISOLATION CURB W/  
 CONDENSER SUPPORT**

LAST DATE  
 REVISED  
**08/05/19**

REVISED BY  
**BB**

DRAWING NO.  
**S-89.102-1A**

S-89