

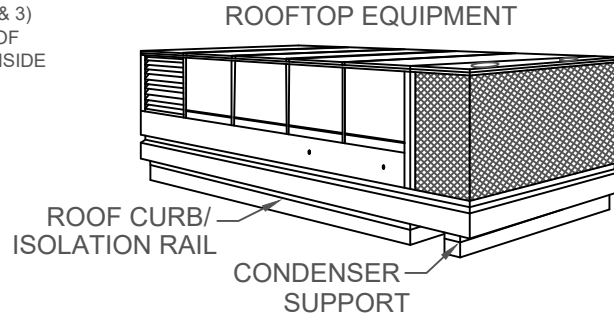
**NOTE:**  
 MODEL ESR TO PROVIDE CONTINUOUS SUPPORT OF UNIT WEIGHT WITH 4" TOP RAIL.

**RESTRAINT AND ATTACHMENT DATA**

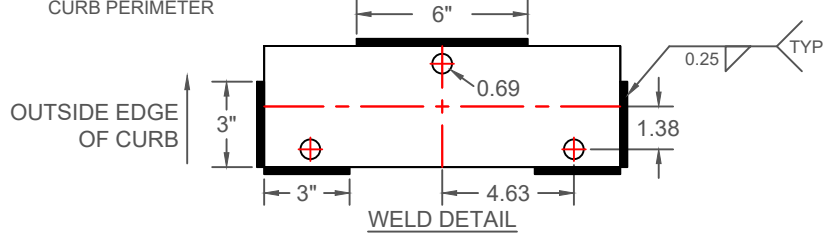
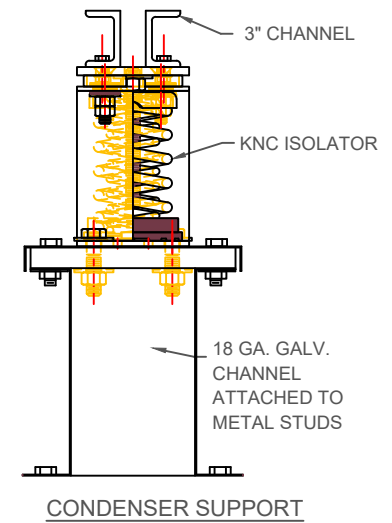
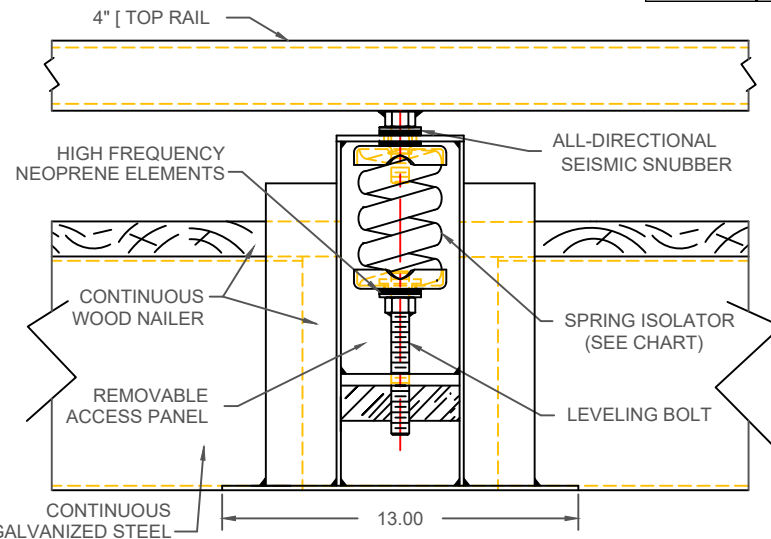
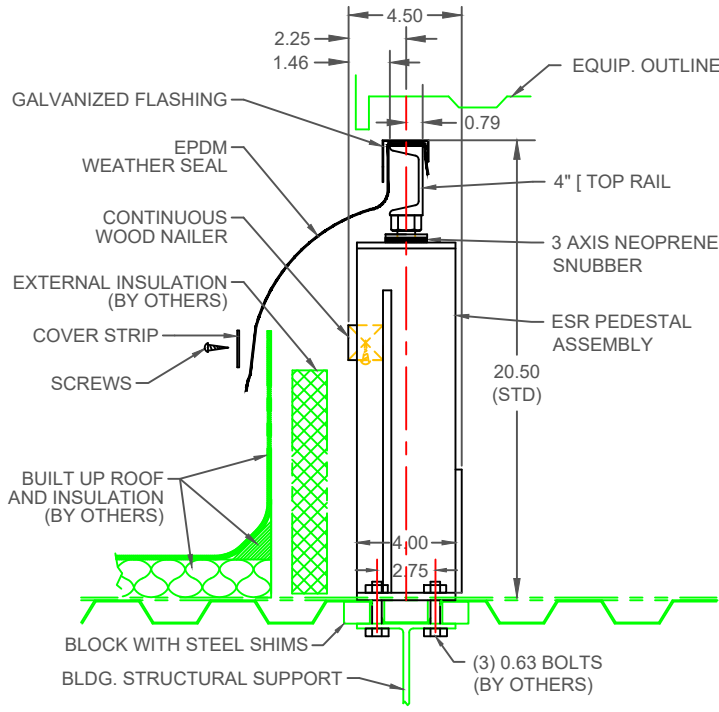
TO ACHIEVE FULL RESTRAINT RATING, WELD EACH ESR PEDESTAL TO STRUCTURAL STEEL IN 3 PLACES (MIN.) AS NOTED. 1) A 6"x 0.25" WELD CENTERED ON THE OUTSIDE EDGE OF EACH PEDESTAL BASEPLATE. 2) & 3) TWO 6"x 0.25" WELDS WRAPPED AROUND EACH CORNER AT THE ENDS OF THE INSIDE EDGE WITH 3" OF WELD ON EACH END AND 3" ALONG THE INSIDE EDGE.

**RESTRAINT RATING DATA (PER PEDESTAL)**

AT STANDARD HEIGHT WITH NO CROSS BRACES  
 WELDED ATTACHMENT  
 HORIZONTAL - 3247 LB, VERTICAL - 8906 LB, COMBINED - 1164 LB  
 BOLTED ATTACHMENT  
 HORIZONTAL - 1547 LB, VERTICAL - 3984 LB, COMBINED - 1164 LB  
 CROSS BRACE MOMENT RESISTANCE - 18000 IN LB PER PEDESTAL



MODEL	SPRING CAPACITY (PER PEDESTAL) BY MODEL					
	RATED		SPRING			
	LOAD lb/kg	DEFL in/mm	FR. HT. in/mm	O.D. in/mm	COLOR	
				OUTER	INNER	
ESR-2-100	100/45	2.00/51	6.09/155	3.50/89	GRAY	
ESR-2-135	135/61	2.00/51	6.09/155	3.50/89	BEIGE	
ESR-2-185	185/84	2.00/51	6.09/155	3.50/89	BROWN	
ESR-2-225	225/102	2.00/51	6.09/155	3.50/89	GRAY	BROWN
ESR-2-250	250/113	2.00/51	6.09/155	3.50/89	BLUE	
ESR-2-375	375/170	2.00/51	6.09/155	3.50/89	BLUE	BROWN
ESR-2-500	500/227	2.00/51	6.09/155	3.50/89	GREEN	
ESR-2-625	625/283	2.00/51	6.09/155	3.50/89	GREEN	BROWN
ESR-2-750	750/340	2.00/51	6.09/155	3.50/89	BLACK	
ESR-2-875	875/397	2.00/51	6.09/155	3.50/89	BLACK	BROWN
ESR-2-995	995/451	2.00/51	6.09/155	3.50/89	ORANGE	
ESR-2-1120	1120/508	2.00/51	6.09/155	3.50/89	ORANGE	BROWN
ESR-2-1400	1400/635	2.01/51	6.09/155	3.50/89	ORANGE	GREEN
ESR-2-1600	1600/726	2.00/51	6.09/155	3.50/89	RED	
ESR-2-1975	1975/896	1.98/50	6.09/155	3.50/89	RED	GREEN



**SPECIFICATIONS**

- SPRING ISOLATORS ARE COMPUTER SELECTED AND LOCATED TO NOMINALLY PROVIDE THE RATED STATIC DEFLECTION.
- SPRING ISOLATORS HAVE A MINIMUM Kx/Ky OF 1.2.
- SPRING ISOLATORS HAVE A TYPICAL OVERLOAD CAPACITY OF 50%.
- SPRING ISOLATORS ARE SAFE AT SOLID LOADING.
- SPRING ISOLATORS ARE POWDER COATED.



TITLE  
 ESR-2 ISOLATION CURB W/  
 CONDENSER SUPPORT

LAST DATE  
 REVISED  
 08/05/19

REVISED BY  
 BB

DRAWING NO.  
 S-89.202-1A

S-89