

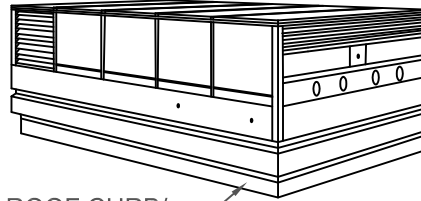
**NOTE:**

MODEL ESR TO PROVIDE CONTINUOUS SUPPORT OF UNIT WEIGHT WITH 4" TOP RAIL.

**RESTRAINT AND ATTACHMENT DATA**

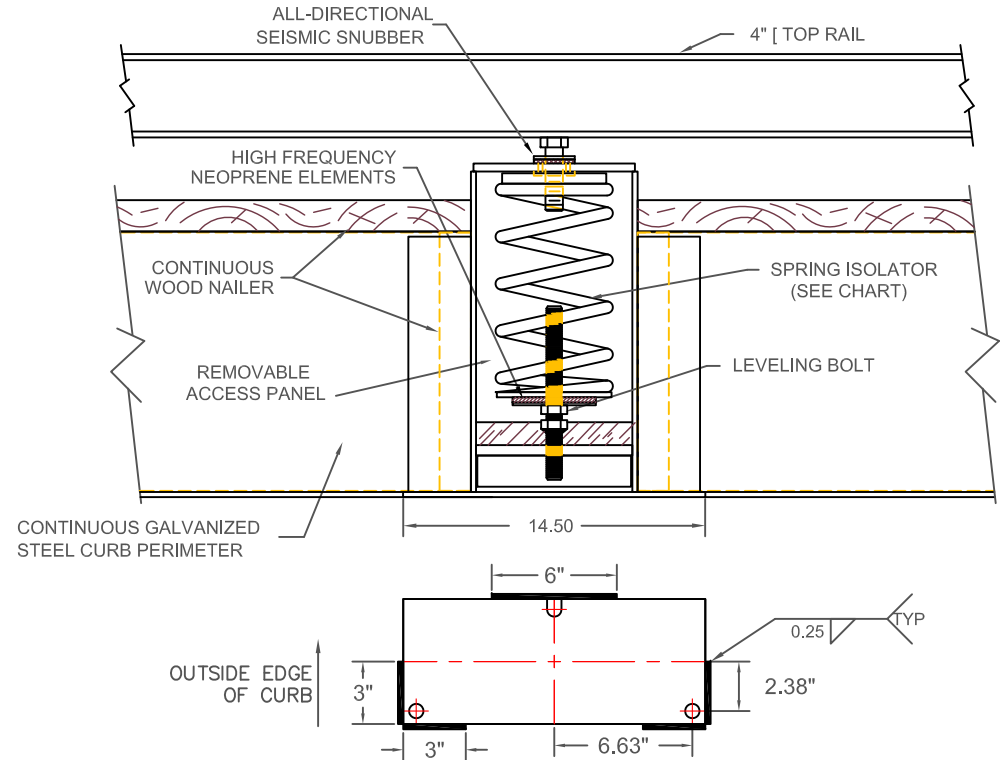
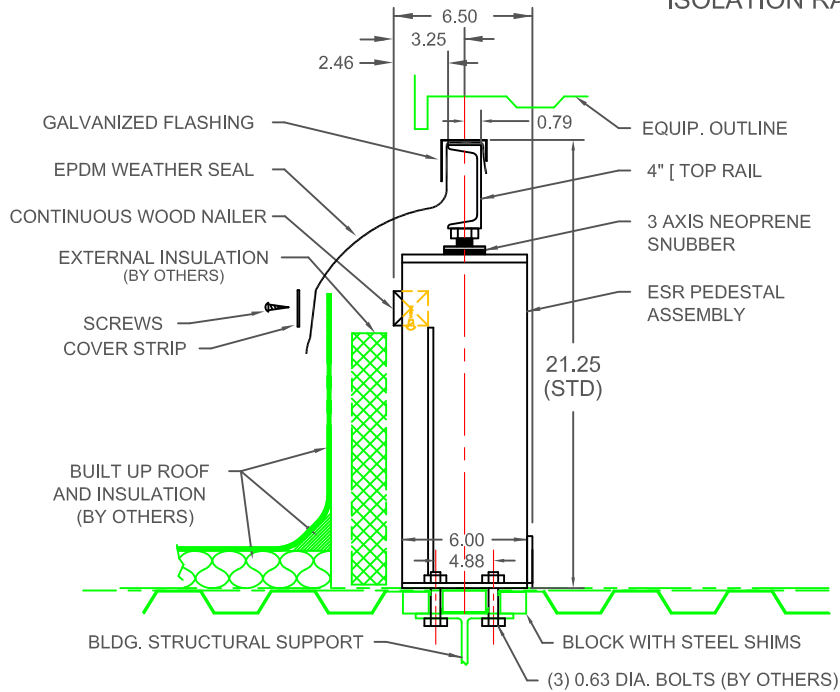
RESTRAINT PEDESTALS ARE DESIGNED FOR 3000 LB LATERAL WIND OR SEISMIC LOADING. TO ACHIEVE FULL RATING, WELD EACH ESR PEDESTAL TO STRUCTURAL STEEL IN 3 PLACES (MIN.) AS NOTED. 1) A 6"x 0.25" WELD CENTERED ON THE OUTSIDE EDGE OF EACH PEDESTAL BASEPLATE. 2) & 3) TWO 6"x 0.25" WELDS WRAPPED AROUND EACH CORNER AT THE ENDS OF THE INSIDE EDGE WITH 3" OF WELD ON EACH END AND 3" ALONG THE INSIDE EDGE. A LESSER CAPACITY CAN ALSO BE ACHIEVED IF BOLTED TO STRUCTURAL STEEL USING 5/8" HARDWARE.

**ROOFTOP EQUIPMENT**



ROOF CURB/  
ISOLATION RAIL

MODEL	SPRING CAPACITY (PER PEDESTAL) BY MODEL					
	RATED		SPRING			
	LOAD lb/kg	DEFL in/mm	FR. HT. in/mm	O.D. in/mm	COLOR	
					OUTER	INNER
ESR-3-100	100/45	4.00/102	10.00/254	5.63/143	GRAY	
ESR-3-250	250/113	4.00/102	10.00/254	5.63/143	BLUE	
ESR-3-500	500/227	4.00/102	10.00/254	5.63/143	GREEN	
ESR-3-750	750/340	4.00/102	10.00/254	5.63/143	BLACK	
ESR-3-1000	1000/454	4.00/102	10.00/254	5.63/143	RED	
ESR-3-1250	1250/567	4.00/102	10.00/254	5.63/143	BROWN	
ESR-3-1600	1600/726	4.00/102	10.00/254	5.63/143	ORANGE	
ESR-3-1850	1850/839	3.94/100	10.00/254	5.63/143	ORANGE	BLUE
ESR-3-2100	2100/953	3.85/98	10.00/254	5.63/143	ORANGE	GREEN



**SPECIFICATIONS**

- SPRING ISOLATORS ARE COMPUTER SELECTED AND LOCATED TO NOMINALLY PROVIDE THE RATED STATIC DEFLECTION.
- SPRING ISOLATORS HAVE A MINIMUM Kx/Ky OF 1.2.
- SPRING ISOLATORS HAVE A TYPICAL OVERLOAD CAPACITY OF 50%.
- SPRING ISOLATORS ARE SAFE AT SOLID LOADING.
- SPRING ISOLATORS ARE POWDER COATED.



TITLE  
**ESR-3 ISOLATION CURB**

LAST DATE  
REVISED  
**06/10/09**

REVISED BY  
**BB**

DRAWING NO.  
**S-89.300-1A**