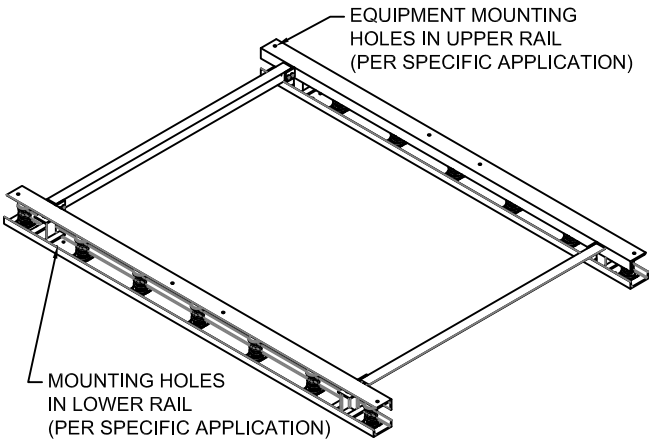
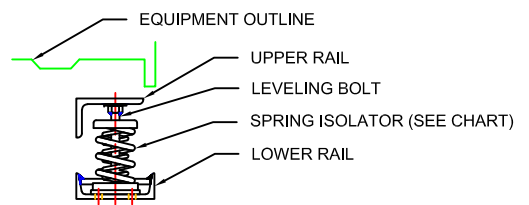
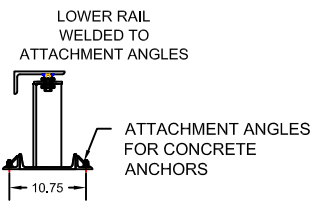
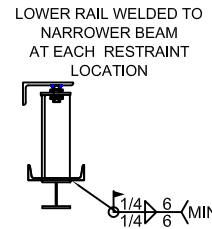
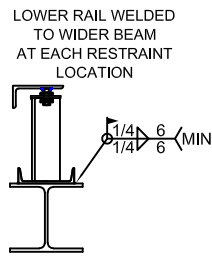
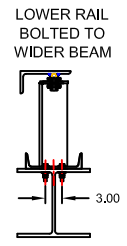


MODEL	SPRING CAPACITY - EACH									
	RATED				SPRING					
	LOAD		DEFL.		FREE HT.		O.D.		COLOR	
	lb	kg	in	mm	in	mm	in	mm	OUTER	INNER
CTR-1-50	50	23	1.00	25	4.20	107	3.00	76	BEIGE	
CTR-1-100	100	45	1.00	25	4.20	107	3.00	76	CHROME	
CTR-1-250	250	113	1.79	45	4.20	107	3.00	76	BLUE	
CTR-1-450	450	204	1.54	39	4.20	107	3.00	76	GREEN	
CTR-1-625	625	283	1.44	37	4.20	107	3.00	76	BLACK	
CTR-1-800	800	363	1.31	33	4.20	107	3.00	76	GRAY	
CTR-1-1000	1000	454	1.15	29	4.20	107	3.00	76	RED	
CTR-1-1250	1250	567	1.09	28	4.20	107	3.00	76	BROWN	
CTR-1-1700	1700	771	0.95	24	4.20	107	3.00	76	ORANGE	
CTR-1-2200	2200	998	1.00	26	4.20	107	3.00	76	ORANGE	GRAY
CTR-1-2465	2465	1118	1.00	25	4.20	107	3.00	76	BLUE	
CTR-1-2865	2865	1300	1.00	25	4.20	107	3.00	76	BLUE	GRAY
CTR-1-3500	3500	1588	1.00	25	4.20	107	3.00	76	BLUE	BROWN



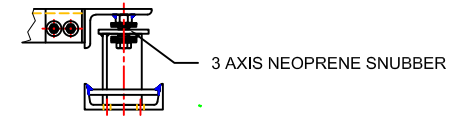
ATTACHMENT DATA

- TO ACHIEVE FULL RATING, WELD EACH LOWER RAIL TO STRUCTURAL STEEL ON BOTH SIDES, CENTERED ON EACH RESTRAINT LOCATION - (MIN) 0.25" FILLET WELDS 6" LONG.
- TO ACHIEVE FULL RATING, BOLT EACH LOWER RAIL TO STRUCTURAL STEEL USING 1/2" FASTENERS, ASTM A325 OR SAE GR. 5, IN ALL HOLES PROVIDED IN LOWER RAIL.
- CAPACITY MAY BE REDUCED WHEN USING CONCRETE ANCHORS WITH THE ATTACHMENT ANGLES.



ISOLATOR SPECIFICATIONS

- SPRING ISOLATORS ARE COMPUTER SELECTED AND LOCATED TO NOMINALLY PROVIDE THE RATED STATIC DEFLECTION.
- SPRING ISOLATORS HAVE A MINIMUM Kx/Ky OF 1.0.
- SPRING ISOLATORS HAVE A TYPICAL OVERLOAD CAPACITY OF 50%.
- SPRING ISOLATORS CAN BE COMPRESSED SOLID WITHOUT PERMANENT DEFORMATION.
- SPRING ISOLATORS ARE POWDER COATED.



RESTRAINT DATA

INTEGRATED RESTRAINTS ARE DESIGNED FOR 2,393 LB LATERAL 10,731 LB VERTICAL WIND AND/OR SEISMIC LOADING.

NOTE:

- MINIMUM SUPPORT BEAM SIZE: 5.0 WIDE
- STANDARD FINISH: HOT DIPPED GALVANIZED
- OPTIONAL FINISHES: POWDER COAT, PAINT



TITLE
**CTR-1 QuietRail™
STRUCTURAL FRAME BASE**

LAST DATE
REVISED
08/23/19

REVISED BY
JW

DRAWING NO.
S-92.100-1A

S-92