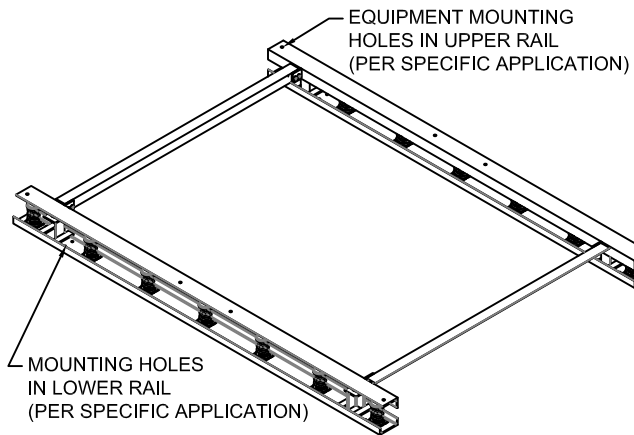


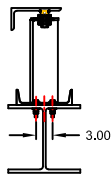
MODEL	SPRING CAPACITY - EACH										
	RATED				SPRING						
	LOAD		DEFL.		FREE HT.		O.D.		COLOR		
	lb	kg	in	mm	in	mm	in	mm	OUTER	INNER 1	INNER 2
CTR-2H-2000	2000	907	2.00	51	7.00	178	5.00	127	ORANGE		
CTR-2H-2500	2500	1134	2.00	51	7.00	178	5.00	127	BLUE		
CTR-2H-2750	2750	1247	2.00	51	7.00	178	5.00	127	BLUE	BLUE	
CTR-2H-3025	3025	1372	2.02	51	7.00	178	5.00	127	BLUE	GREEN	
CTR-2H-3250	3250	1474	2.00	51	7.00	178	5.00	127	BLUE	BLACK	
CTR-2H-3500	3500	1588	2.00	51	7.00	178	5.00	127	BLUE	ORANGE	
CTR-2H-3900	3900	1769	2.00	51	7.00	178	5.00	127	BLUE	ORANGE	GREEN
CTR-2H-4100	4100	1860	2.00	51	7.00	178	5.00	127	BLUE	RED	
CTR-2H-4500	4500	2041	2.00	51	7.00	178	5.00	127	BLUE	RED	GREEN



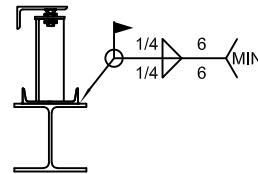
**ATTACHMENT DATA**

- TO ACHIEVE FULL RATING, WELD EACH LOWER RAIL TO STRUCTURAL STEEL ON BOTH SIDES, CENTERED ON EACH RESTRAINT LOCATION - (MIN) 0.25" FILLET WELDS 6" LONG.
- TO ACHIEVE FULL RATING, BOLT EACH LOWER RAIL TO STRUCTURAL STEEL USING 1/2" FASTENERS, ASTM A325 OR SAE GR. 5, IN ALL HOLES PROVIDED IN LOWER RAIL.
- CAPACITY MAY BE REDUCED WHEN USING CONCRETE ANCHORS WITH THE ATTACHMENT ANGLES.

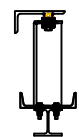
LOWER RAIL BOLTED TO WIDER BEAM



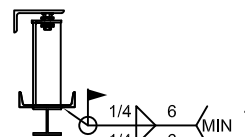
LOWER RAIL WELDED TO WIDER BEAM AT EACH RESTRAINT LOCATION



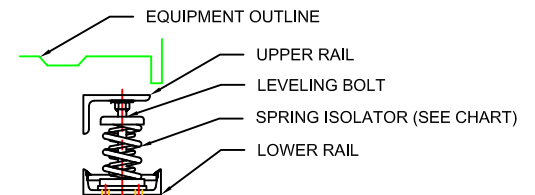
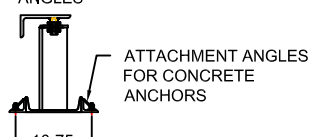
LOWER RAIL BOLTED TO NARROWER BEAM



LOWER RAIL WELDED TO NARROWER BEAM AT EACH RESTRAINT LOCATION

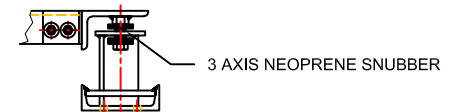


LOWER RAIL WELDED TO ATTACHMENT ANGLES



**ISOLATOR SPECIFICATIONS**

- SPRING ISOLATORS ARE COMPUTER SELECTED AND LOCATED TO NOMINALLY PROVIDE THE RATED STATIC DEFLECTION.
- SPRING ISOLATORS HAVE A MINIMUM Kx/Ky OF 1.0.
- SPRING ISOLATORS HAVE A TYPICAL OVERLOAD CAPACITY OF 50%.
- SPRING ISOLATORS CAN BE COMPRESSED SOLID WITHOUT PERMANENT DEFORMATION.
- SPRING ISOLATORS ARE POWDER COATED.



**RESTRAINT DATA**

INTEGRATED RESTRAINTS ARE DESIGNED FOR 2,393 LB LATERAL 10,731 LB VERTICAL WIND AND/OR SEISMIC LOADING.

- NOTE:**
- MINIMUM SUPPORT BEAM SIZE: 5.0 WIDE
  - STANDARD FINISH: HOT DIPPED GALVANIZED
  - OPTIONAL FINISHES: POWDER COAT, PAINT