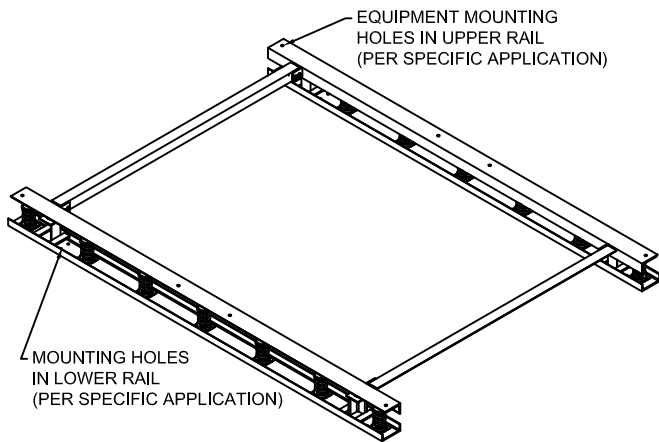


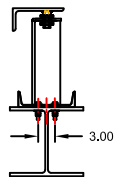
MODEL	SPRING CAPACITY - EACH									
	RATED				SPRING					
	LOAD		DEFL.		FREE HT.	O.D.		COLOR		
lb	kg	in	mm	in	mm	in	mm	OUTER	INNER	
CTR-4L-100	100	45	4.00	102	10.00	254	5.63	143	GRAY	
CTR-4L-250	250	113	4.00	102	10.00	254	5.63	143	BLUE	
CTR-4L-500	500	227	4.00	102	10.00	254	5.63	143	GREEN	
CTR-4L-750	750	340	4.00	102	10.00	254	5.63	143	BLACK	
CTR-4L-1000	1000	454	4.00	102	10.00	254	5.63	143	RED	
CTR-4L-1250	1250	567	4.00	102	10.00	254	5.63	143	BROWN	
CTR-4L-1600	1600	726	4.00	102	10.00	254	5.63	143	ORANGE	
CTR-4L-1850	1850	841	4.00	102	10.00	254	5.63	143	ORANGE	BLUE
CTR-4L-2100	2100	953	4.00	102	10.00	254	5.63	143	ORANGE	GREEN



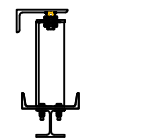
**ATTACHMENT DATA**

- TO ACHIEVE FULL RATING, WELD EACH LOWER RAIL TO STRUCTURAL STEEL ON BOTH SIDES, CENTERED ON EACH RESTRAINT LOCATION - (MIN) 0.25" FILLET WELDS 6" LONG.
- TO ACHIEVE FULL RATING, BOLT EACH LOWER RAIL TO STRUCTURAL STEEL USING 1/2" FASTENERS, ASTM A325 OR SAE GR. 5, IN ALL HOLES PROVIDED IN LOWER RAIL.
- CAPACITY MAY BE REDUCED WHEN USING CONCRETE ANCHORS WITH THE ATTACHMENT ANGLES.

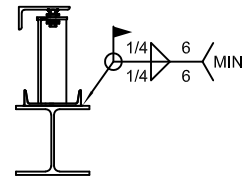
LOWER RAIL BOLTED TO WIDER BEAM



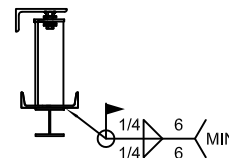
LOWER RAIL BOLTED TO NARROWER BEAM



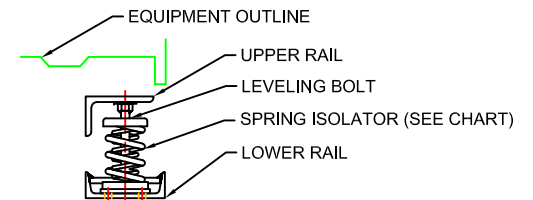
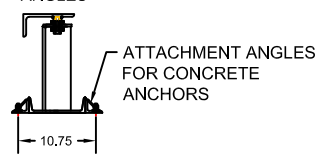
LOWER RAIL WELDED TO WIDER BEAM AT EACH RESTRAINT LOCATION



LOWER RAIL WELDED TO NARROWER BEAM AT EACH RESTRAINT LOCATION

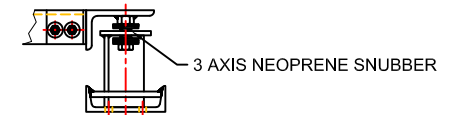


LOWER RAIL WELDED TO ATTACHMENT ANGLES



**ISOLATOR SPECIFICATIONS**

- SPRING ISOLATORS ARE COMPUTER SELECTED AND LOCATED TO NOMINALLY PROVIDE THE RATED STATIC DEFLECTION.
- SPRING ISOLATORS HAVE A MINIMUM Kx/Ky OF 1.0.
- SPRING ISOLATORS HAVE A TYPICAL OVERLOAD CAPACITY OF 50%.
- SPRING ISOLATORS CAN BE COMPRESSED SOLID WITHOUT PERMANENT DEFORMATION.
- SPRING ISOLATORS ARE POWDER COATED.



**RESTRAINT DATA**

INTEGRATED RESTRAINTS ARE DESIGNED FOR 2,393 LB LATERAL, 5,576 LB VERTICAL WIND AND/OR SEISMIC LOADING.

**NOTE:**

- MINIMUM SUPPORT BEAM SIZE: 5.0" WIDE.
- STANDARD FINISH: HOT DIPPED GALVANIZED.
- OPTIONAL FINISHES: POWDER COAT, PAINT.



TITLE

CTR-4L QuietRail™  
STRUCTURAL FRAME BASE

LAST DATE  
REVISED  
08/23/19

REVISED BY  
JW

DRAWING NO.  
S-92.400-1A

S-92